



EASY-CLAMPING SYSTEM FOR BRILLANT 220 / 230 / 250

The innovative Easy-Clamping System is a base plate that attaches to the T-slot table and serves as a quick clamping station for a variety of vices and extension blocks. Available for use on Brillant 220, 230 and 250 cut off machines, the system not only saves time, but squares the vice securely to the table for more dependable clamping.

Fast lock vices 50, 60 and 80 and the X-Clamp System can be mounted directly on the base plate.

For angular and parallel cutting, fast lock vice 50 can be mounted on a rotating plate with head piece 2.

For special metallographic applications like thin sections and target preparations of microelectronic components, the combination of rotating plate, head piece 1 and the vacuum or duo-sample holder is recommended. The special duo-sample holder can go straight from the cut off machine to precision parallel grinding and polishing in the Saphir 550 with Rubin 540.

» base for quick and easy fixing and adjusting of various clamping tools on machine table

» for fixing of: Fast lock vice 80 / 60 / 50

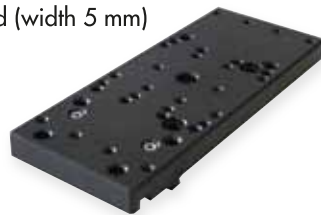
X-clamp system 3858



EASY-CLAMPING BASE

- » for tables with additional slots
- » T-slot 8 mm; range 120 mm (Brillant 220)
- » T-slot 12 mm; range 150 mm (Brillant 230, 250)
- » HxWxD 15x80x200 mm
- » incl. screwdriver with ball head (width 5 mm)

Order No. Z2236008



ROTATING PLATE

- » for easy-clamping base Z2236008
- » quick holding fixture for quick and easy changing the head-piece
- » with vernier scale
- » 15 degree increments

Order No. Z2236005



HEAD PIECES

- » for quick holding fixture on rotating plate Z2236005
- » fine adjust device for parallel alignment of sample to cutting wheel

HEAD PIECE 1

- » for vacuum- and duo-sample holder

Order No. Z2236006



HEAD PIECE 2

- » for fast lock vice 50 and custom made solutions

Order No. Z2236007



VACUUM SAMPLE HOLDER

- » for head piece 1
- » for microscope slides 28x48mm

Order No. Z2236002



DUO SAMPLE HOLDER

- » for head piece 1
- » use with parallel-grinding unit Rubin 540
- » for thin section and target preparations
- » sample diameter max. 30x55mm
- » 4 clamping screws with ball head screwdriver

Order No. Z2236003





EASY-CLAMPING SYSTEM FOR BRILLANT 220 / 230 / 250

APPLICATION

Easy-clamping base Z2236008



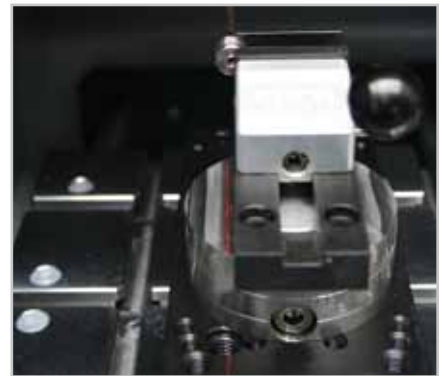
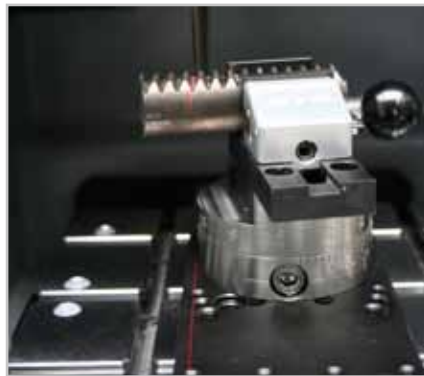
+ Fast lock vice 50 Z2270000 (R)
Z2270002 (L)

Easy-clamping base Z2236008
Rotating plate Z2236005
Head piece 2 Z2236007

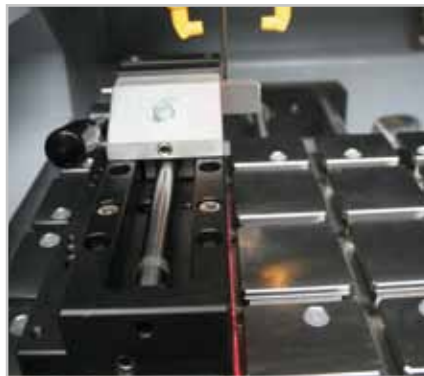
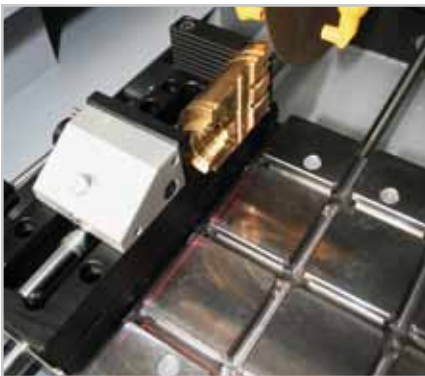


» The combination of base, rotating plate and head piece 2 allows angular parallel cutting

» only for fast lock vice 50



+ Fast lock vice 60 Z2235002 (L)
Z2235001 (R)



+ Fast lock vice 80 Z2231001 (L)
Z2231003 (R)



(L) lever left
(R) lever right



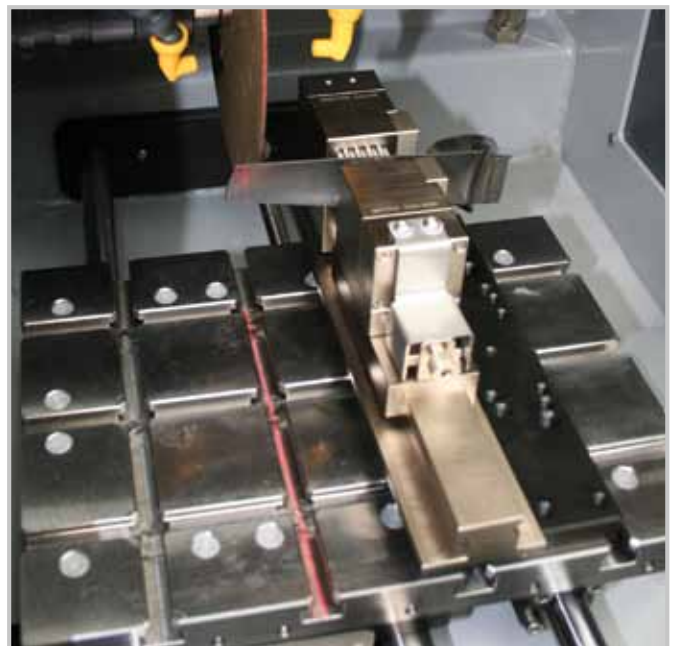
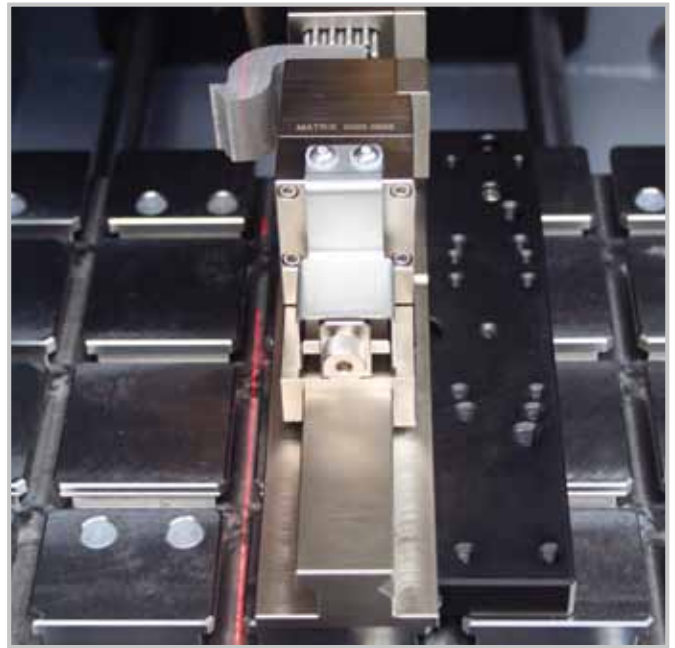
EASY-CLAMPING SYSTEM FOR BRILLANT 220 / 230 / 250

APPLICATION

Easy-clamping base Z2236008



+ Clamping system X-Clamp 3858
Z2234010





EASY-CLAMPING SYSTEM FOR BRILLANT 220 / 230 / 250

APPLICATION

Easy-clamping base Z2236008



Easy-clamping base Z2236008

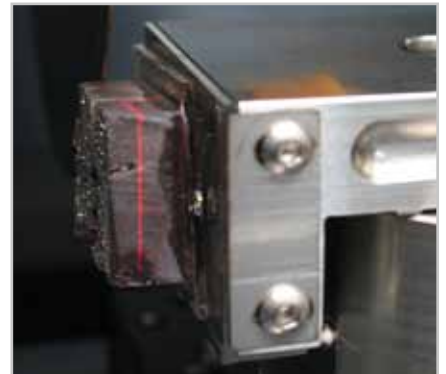
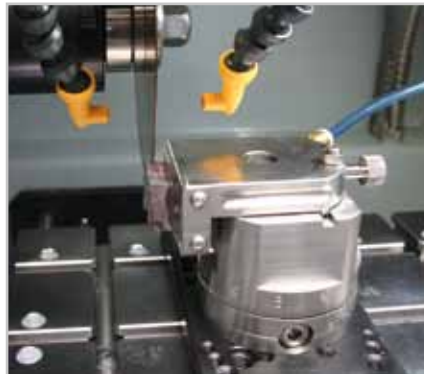
Rotating plate Z2236005

Head piece 1 Z2236006



» The combination of base, rotating plate and head piece 1 allows angular parallel cutting and use of vacuum- and duo sample holder for special metallographic applications.

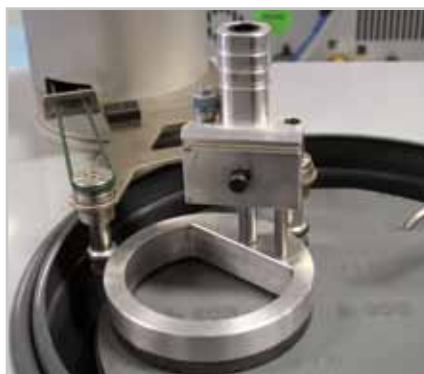
+ Vacuum sample holder Z2236002



+ Duo sample holder Z2236003



» By mounting duo sample holder onto head piece 1 for the first cut and afterwards mounting duo sample holder with still clamped sample onto parallel-grinding unit of Rubin 540 you can achieve precise grinding and polishing results quick and easy. The parallel-grinding unit guarantees constant parallel grinding of the clamped workpiece surface during the whole grinding process. This combination can also be used for target preparation of microelectronic components (e.g. circuit-boards for control purpose).



Parallel-grinding unit Rubin 540

