



UNIVERSAL POWER CLAMPING SYSTEM (for Brillant 255/265/270/280/290)



The universal power clamping system for Brillant 255, 265, 270, 280 and 290 consists of a basic module which can be completed with various clamping jaw systems. You can choose between a fixed mounted and a quick-changing jaw system. The fixed mounted basic jaws LC 90 can be added to the basic module with the completing V-groove jaw 100 or flat jaw 100.

The quick change connection with pull-down studs can be equipped with the X-Clamp 100 for asymmetric workpieces or variable step jaws. Both jaw systems are combinable with customized clamping jaws.

Various accessories are available for using the universal power clamping system in side position or for supporting continuous long workpieces and reducing vibrations during the cutting process.

All modules are made from high quality steel and are surface hardened, robust and insensitive to dirt.

BASIC MODULE LC 90

- » Easy and safe clamping of various workpieces
- » Various clamping jaws available
- » Up to 28 kN tension with modest effort through mechanical power transmission
- » Adjustable clamping force (11 settings)
- » Incl. fasteners for T-slot nuts 12 mm and hand crank

Order No. Z2234001

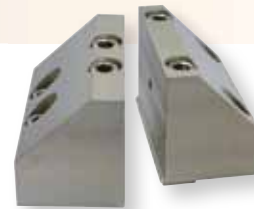
TECHNICAL DATA

Width	90 mm
Length	339 mm
Base height	80 mm
Clamping width	depends on jaws
Weight	13 kg (without jaws)
Max. clamp. force	28 kN

CARRIER JAWS LC 90 (1 pair)

- » Simple fastening with just one screw
- » Made of high-strength aluminum with ceramic coating

Order No. Z2234003



V-GROOVE JAW 100 (1 piece)

- » Rotating jaw (case-hardened steel)
- » Jaw size (WxH) 100x70 mm
- » Incl. fixing screw



Order No. Z2234004

- » Two horizontal V-grooves
- » For clamping round materials between \varnothing 10 and 100 mm
- » Combinable with flat jaw 100



FLAT JAW 100 (1 piece)

- » Rotating jaw (case-hardened steel)
- » Jaw size (WxH) 100x70 mm
- » Incl. fixing screw



Order No. Z2234005

- » Flat tightening surface
- » For clamping parallel specimens
- » Combinable with V-groove jaw 100





UNIVERSAL POWER CLAMPING SYSTEM (for Brillant 255/265/270/280/290)



BASE MODULE LC 90 WITH QUICK-CHANGING DEVICE

- » Easy and safe clamping of various workpiece
- » Up to 28 kN tension with modest effort through mechanical power transmission
- » Various exchangeable jaws for clamping asymmetric specimens

QUICK-CHANGING DEVICE (1 pair)

- » Quick and easy connection of modules by using pull-down studs
- » For fixation of
 - step jaw 100
 - clamping system X-Clamp 100
 - customized clamping solutions

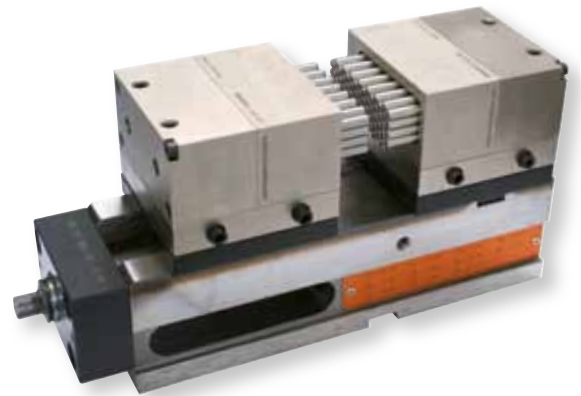


Order No. Z2234009

CLAMPING SYSTEM X-CLAMP 100 (1 pair)

- » Individual and safe clamping of various specimen shapes and sizes with spring suspended stainless steel plungers
- » Perfect form fit with minimal effort
- » Time-saving
- » Use only with quick changing device
- » Incl. torque wrench and fixing screws

Order No. Z2234002



TECHNICAL DATA

Jaw size (WxH)	100x50 mm
Plunger area (WxH)	30x79 mm
Plunger stroke	21 mm
Max. clamp. force	10 kN



- » Clamping process:
 - » The spring suspended plungers fit tightly to the specimen
 - » Fix the plungers
 - » Apply clamping force via basic module LC 90





UNIVERSAL POWER CLAMPING SYSTEM (for Brillant 255/265/270/280/290)



BASIC MODULE LC 90 WITH QUICK-CHANGING DEVICE

- » Easy and safe clamping of various workpieces
- » Up to 28 kN tension with modest effort through mechanical power transmission
- » Various exchangeable jaws for clamping asymmetric specimens

QUICK-CHANGING DEVICE (1 pair)

- » Quick and easy connection of modules by using pull-down studs
- » For fixation of
 - step jaw 100
 - clamping system X-Clamp 100
 - customized clamping solutions



Order No. Z2234009

STEP JAW 100 (1 pair)

- » Clamping of parallel workpieces
- » Application of clamping force via basic module LC 90
- » Step jaw 180° rotatable
- » Use only with quick changing device

TECHNICAL DATA

Width	100 mm
Height	65 resp. 45 mm
Clamping width	0–132,5 mm resp. 120–252 mm



Order No. Z2234008





UNIVERSAL POWER CLAMPING SYSTEM (for Brillant 255/265/270/280/290)

ACCESSORIES

BASE 90°

- » For installing the basic module LC 90 in side position 90°
- » Incl. fixing material for T-slot nut DIN 650 12 mm

Order No. Z2234006



SUPPORT MODULE (1 piece)

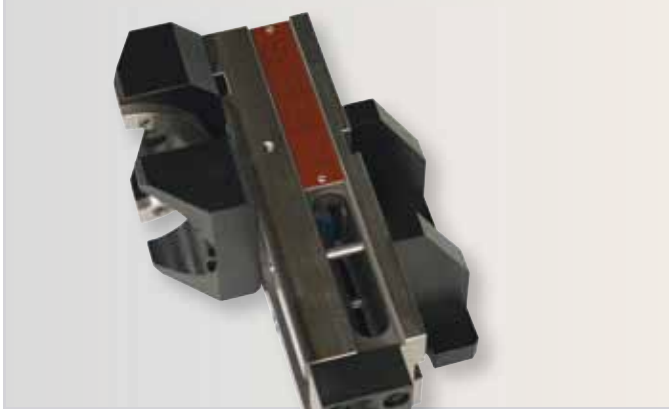
- » For supporting long workpieces
- » Reducing of vibrations
- » The spring suspended plungers fit tightly to the specimen
- » Fix the plungers
- » Supplementary fixation of workpiece from above possible with universal vice
- » Quick and easy connection of modules by using pull-down studs

Order No. Z1350023





UNIVERSAL POWER CLAMPING SYSTEM (for Brillant 255/265/270/280/290)



BASIC MODULE LC 90 WITH CUSTOMIZED CLAMPING JAWS AND BASE 90°

- » Easy and safe clamping of various workpieces
- » Up to 28 kN tension with modest effort through mechanical power transmission
- » Various exchangeable jaws for clamping asymmetric specimens

BASIC MODULE LC 90

- » Various clamping jaws available
- » Adjustable clamping force (11 settings)
- » Incl. fasteners for T-slot nut 12 mm and hand crank

Order No. Z2234001

TECHNICAL DATA

Width	90 mm
Length	339 mm
Base height	80 mm
Clamping width	depends on jaws
Weight	13 kg (without jaws)
Max. clamp. force	28 kN



CUSTOMIZED CLAMPING JAWS

- » ATM-service:
Send us your drawing (.DXF or .DWG-file) and we design your individually optimized clamping vice.

