
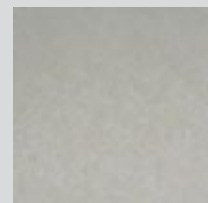


POLIERTÜCHER - POLISHING CLOTHS

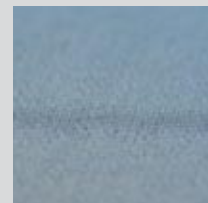
MERKMALE/CHARACTERISTICS	EIGNUNG/SUITABILITY	ANWEND./APPLIC.	Ø 200 mm	Ø 250 mm	Ø 300 mm
A Sehr hartes, perforiertes Chemiefasertuch Hohe Standzeit u. Abtragsleistung Very hard, perforated, chemotextile cloth Long-lasting, high removal rate	Keramik, Hartmetall, Stahl, Grauguss, Aluminium Ceramic, hard metal, steel, cast iron, aluminium		SELBSTKLEBEND/SELF-ADHESIVE		
			92002555	92002564	92002573
			MAGNETISCH/MAGNETIC		
B Hartes Chemiefasertuch Hard chemotextile cloth	Hartmetall, Mineralien, Keramik, Titan, Tantal Hard metal, minerals, ceramic, titanium, tantalum		SELBSTKLEBEND/SELF-ADHESIVE		
			92005678	92005679	92005680
			MAGNETISCH/MAGNETIC		
C Mittelhartes Seidentuch Medium hard silk cloth	C-Stähle, Nichteisenmetalle, Schichten, Kunststoffe (GFK, CFK) C-steels, non-ferrous metals, coatings, plastic (GPR, CFK)		SELBSTKLEBEND/SELF-ADHESIVE		
			92002558	92002567	92002576
			MAGNETISCH/MAGNETIC		
D Weiches Wolltuch Soft wool cloth	Für alle Materialien For all materials		SELBSTKLEBEND/SELF-ADHESIVE		
			92008810	92008811	92008812
			MAGNETISCH/MAGNETIC		
E Mittelhartes Seidentuch Medium hard silk cloth	C-Stähle, Edelmetalle, Schichten, Kunststoffe, Aluminium C-steels, precious metal, coatings, plastics, aluminium		SELBSTKLEBEND/SELF-ADHESIVE		
			92008801	92008802	92008803
			MAGNETISCH/MAGNETIC		
F Kurzgeflocktes, mittelhartes Synthetiktuch Short-nap, medium hard synthetic cloth	Für alle Materialien mittlerer und hoher Härte For all medium and very hard materials		SELBSTKLEBEND/SELF-ADHESIVE		
			92004411	92004412	92004413
			MAGNETISCH/MAGNETIC		
G Kurzgeflocktes, weiches Synthetiktuch Soft, short-nap, synthetic cloth	Für alle Materialien, bes. Ti-Ni-Werkstoffe For all materials, esp. titanium, nickel		SELBSTKLEBEND/SELF-ADHESIVE		
			95002393	95002394	95002395
			MAGNETISCH/MAGNETIC		
H Kurzgeflocktes, weiches Synthetiktuch Soft, short-nap, synthetic cloth	Für alle Materialien For all materials		SELBSTKLEBEND/SELF-ADHESIVE		
			92005681	92005683	92005684
			MAGNETISCH/MAGNETIC		
I Weicher Polierfilz Soft felt cloth	Für alle Materialien For all materials		SELBSTKLEBEND/SELF-ADHESIVE		
			92002563	92002572	92002581
			MAGNETISCH/MAGNETIC		
J Weiches Synthetiktuch (chemikalienbeständig) Soft, porous, synthetic cloth (chemical resistant)	Für alle Materialien For all materials		SELBSTKLEBEND/SELF-ADHESIVE		
			92002562	92002571	92002580
			MAGNETISCH/MAGNETIC		
			92008816	92008817	92008818



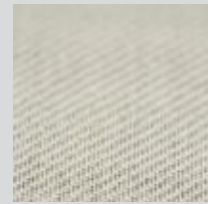
ALPHA



BETA



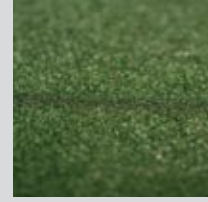
GAMMA



SIGMA



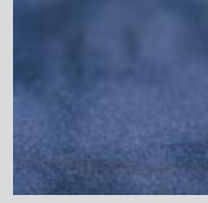
DELTA



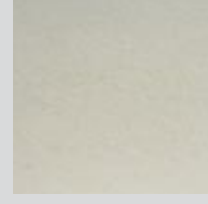
EPSILON



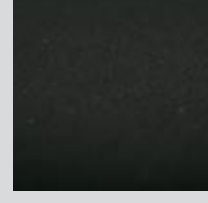
IOTA



ZETA



KAPPA



OMEGA

ATM GMBH
EMIL-REINERT-STR. 2 · D-57636 MAMMELZEN

